

Welcome to The Giles Nursery and Infants' School



Ladybird Class



Our Head Teacher is Mrs Mendel





Meet our Nursery Team



Early Years Practitioners

Teacher



Miss Edwards 



Mrs Morgan 



Mrs Jeffery 




Mrs Aldridge 

Early Years Practitioners




Mrs Ravi 



Mrs Abba 



Mrs Kimble 



Miss Smith – Apprentice



School Uniform

Our school supplier is **Smarty Schoolwear Ltd.**
Smarty's closest shop is located within Stevenage Town Centre.

[Website: www.smartyschoolwear.co.uk](http://www.smartyschoolwear.co.uk)

[Tel: 01707 263909](tel:01707263909)

Non-branded uniform is accepted and available to buy from all major supermarkets.

More information about our school uniform can be found on our school website.

Please select from the main menu: Parents tab – School uniform tab

www.gilesnurseryandinfants.co.uk





Dropping your child to Nursery in the morning

The Nursery teachers will be here to welcome you at our garden gate.

The staff will support your child to enter the Nursery building independently.

On your child's first day, they will be given a name label to wear to welcome them into Ladybird Class.



End of the session

To ensure children leave the classroom safely, your child's teacher will call out your child's name whilst they are seated on the carpet.

The teacher will then guide your child towards the adult who is collecting.

Please advise the office if an alternative adult will be collecting your child. We will need to know their name, and how your child knows them.

Junior children and children under the age of 14 are not allowed to collect children.





Lunchtime



If your child has a 30 hour place here at our nursery, they will be taken over to our hall and dining room by our Nursery team to eat their packed lunch. The children will then be cared for by our lunch time staff team.



Please ensure your child's packed lunch is a healthy lunch box and is **NUT FREE**. We are a **NUT FREE** school as we have many children and staff who are allergic. **Could we also ask that grapes are cut in half.**





15 Hour Daily Routine



Morning and afternoon session



Morning 8:30 to 11:30

Afternoon 12:30 to 3:30

**Child initiated learning
(including outdoor
learning)**

**Registration
Activities
(phonics, maths
circle time)**

**Snack
(in key groups)**

**Adult
led activity
(in key
groups)**

**Child initiated
learning (including out
door
learning)**

**Story &
song time
(in key groups)**

Home time



30 hour children's daily routine (all day)



8:30 to 11:30						
Child initiated learning (including outdoor learning)	Registration activities (phonics, maths, circle time)	Snack In key groups	Adult led activity In key groups	Child initiated learning (including outdoor learning)	Story & song time In key groups	Lunch 11:30 – 12:30



The children will have their packed lunch in the main school with our lunch time staff team.

12:30 – 3:30						
Child initiated learning (including outdoor learning)	Registration activities (phonics, maths, circle time)	Snack In key groups	Adult led activity In key groups	Child initiated learning (including outdoor learning)	Story & song time In key groups	Home time

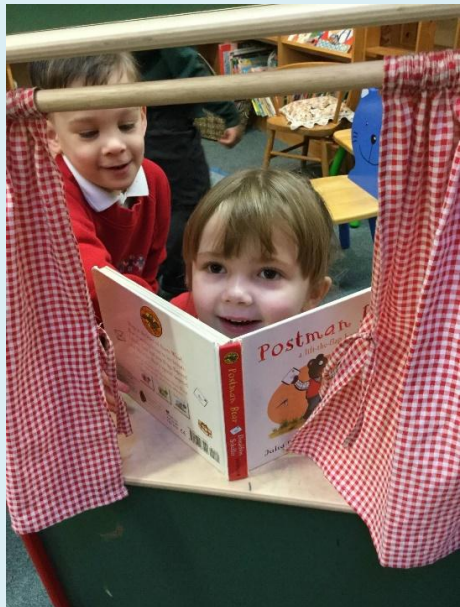


Phonics and Reading

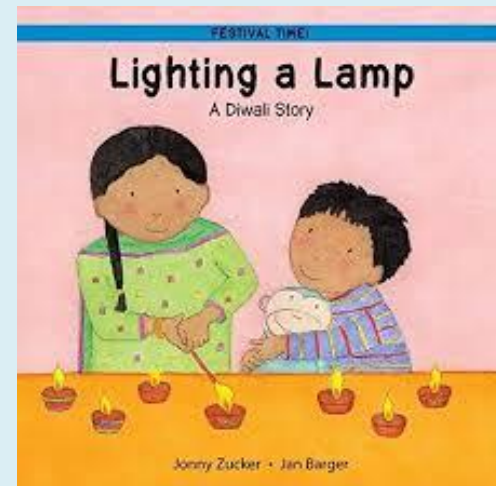
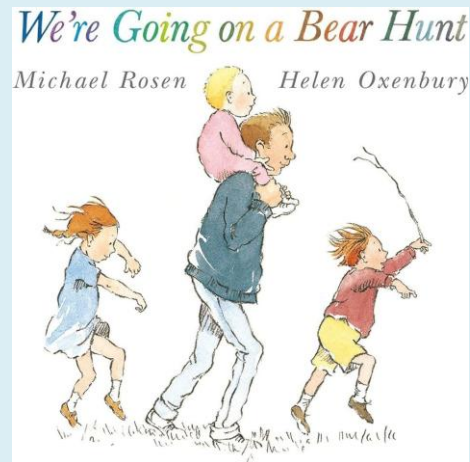
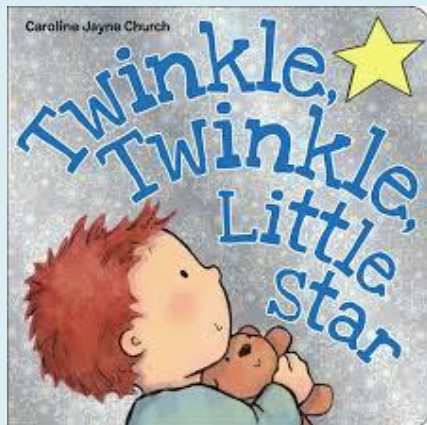
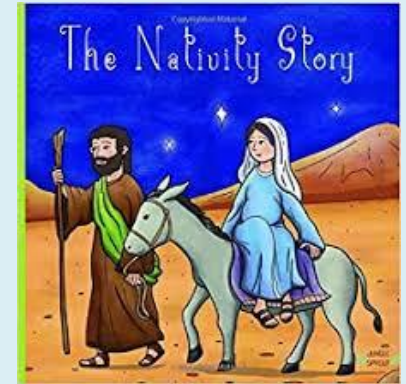
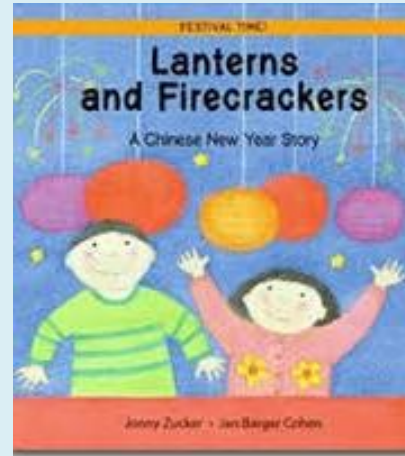
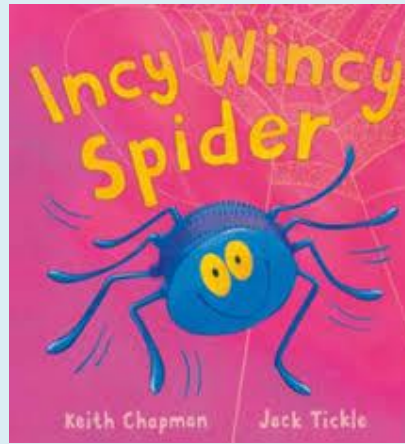
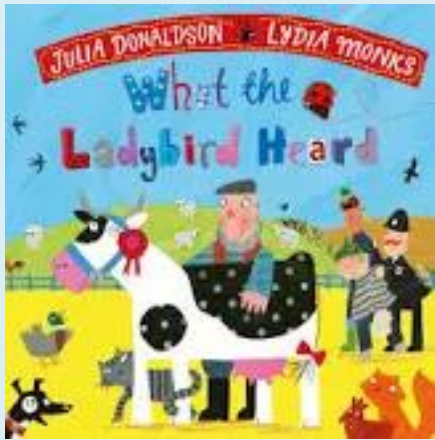
Weekly sessions of phonics learning take place throughout the year.

Each week your child will learn a rhyme or song. Where possible, these are added to a keyring on your child's bookbag.

On a Monday, your child can choose a library book to take home and enjoy. Please return the book on the following Monday morning to receive a new book.

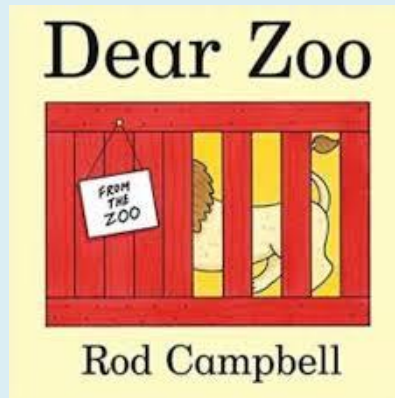
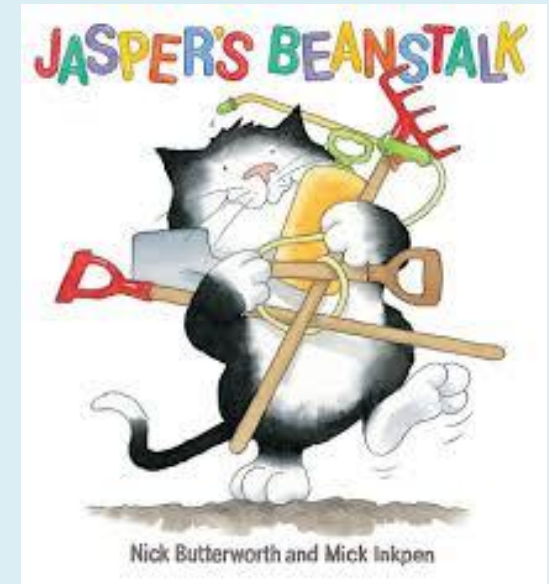
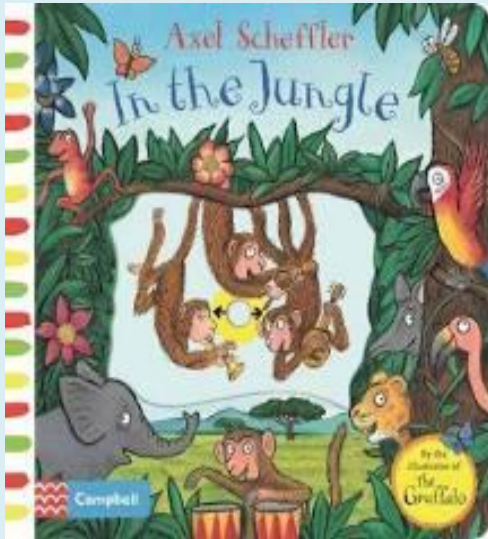


Topics: Autumn term



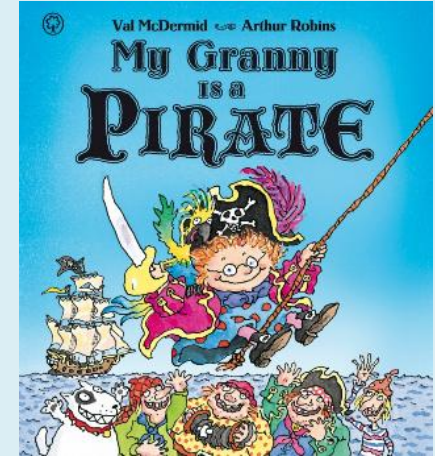
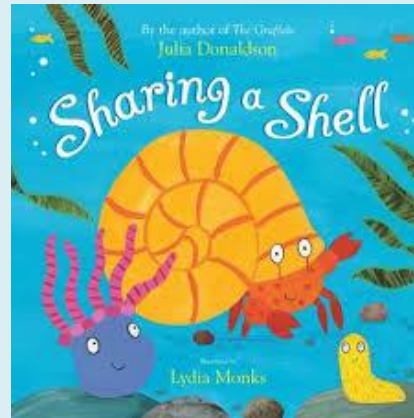
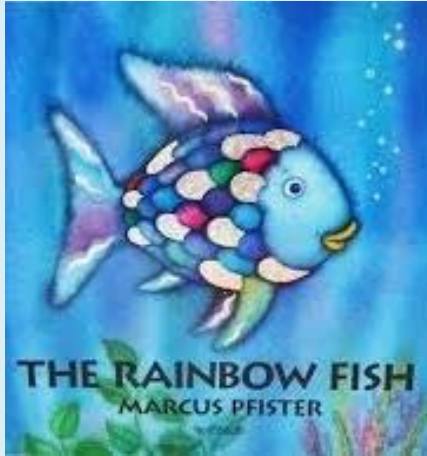
Nursery Rhymes and Celebrations
Linked to stories and special dates

Topics: Spring term



Animals and Growing
Linked to stories and investigations

Topics: Summer term



Sand and Water
Linked to stories and
investigations

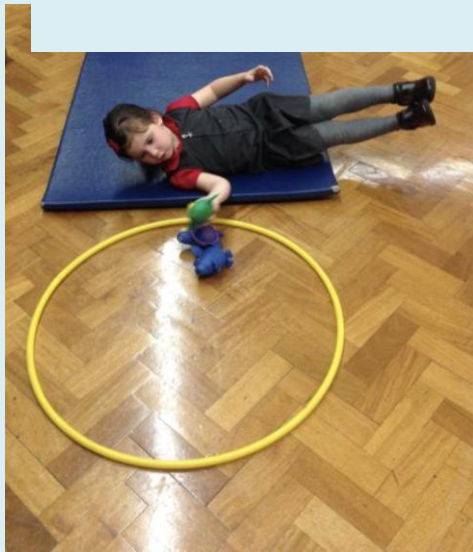
Developing Gross Motor Skills

Throughout the year the children will take part in a weekly session to develop their gross motor skills.

After half term, the children will be taken with members of the Nursery team to the school hall. They will need to wear leggings or trousers (not skirts) and trainers for activities.

Our sessions will be on a Monday morning and Wednesday afternoon.

If your child has their ears pierced, please make sure they are covered with micropore tape.



Group Learning Journeys

- Each group will have a group Learning Journey where staff take photographic evidence of the children's learning each week.
- You will be invited to share your child's group learning journey at times through the year.
- The children will look at the Group Learning Journey often with their friends. This will give them an opportunity to look back on their learning and recall fun and special memories.



Stay and Play

Held every Thursday (**starting from Thursday 13th November**)

You and your family are invited to join your child in Nursery for a play session.

Stay and Play is from **8:30 - 9:20am**



Everyone is welcome!

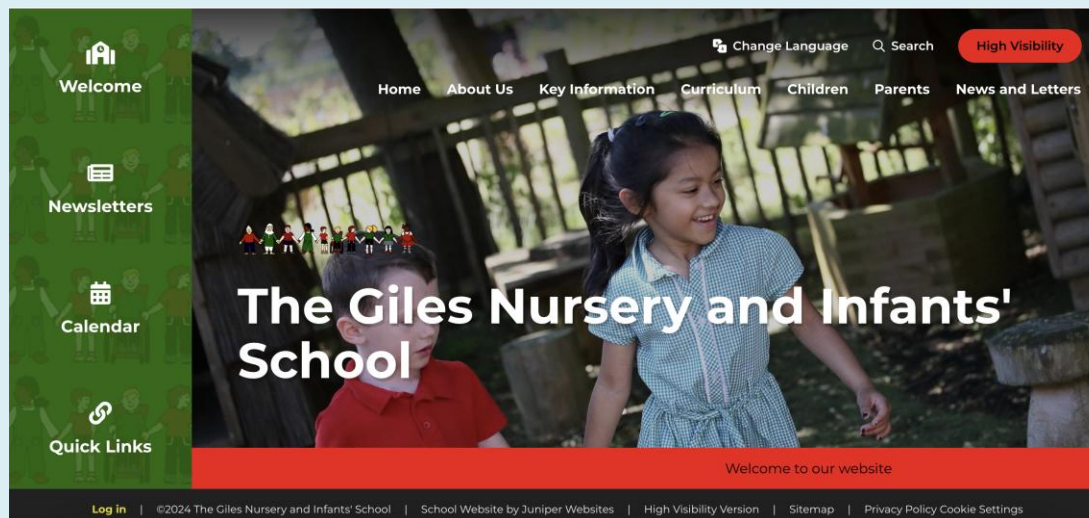


Photographs and Newsletter

Please have a look at our school website:
<https://www.gilesnurseryandinfants.co.uk/>

Photographs of the children are added to the class pages and Mrs Mendel sends out a weekly newsletter via email to all parents/carers. This outlines topics which have been covered during the current week and what the children will be doing next week. It also gives other important school information.

If you would like your child's photograph to be included within our class page, please ensure you have given permission.



Illness, holiday and concerns

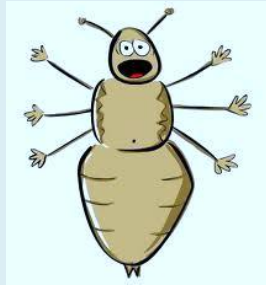


Chicken Pox

Please keep your child at home until all the spots have crusted over.

Head lice

From time to time children will get head lice. Please treat as soon as you see evidence. Your child may still come to school.



Sickness / upset stomach

If your child has sickness or diarrhoea, they must remain home for 48 hours from the last instance of being poorly.



Concerns or worries

If you have any concerns or worries, please speak to your child's teacher at the end of the school day, or telephone the office for an appointment.

Please see our **school policies** regarding holiday requests, attendance and punctuality

<https://www.gilesnurseryandinfants.co.uk/school-policies/>

Any questions?



You may email your questions to: admin@gilesinfants.herts.sch.uk